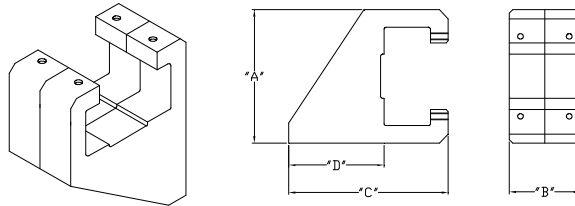


MODEL	INPUT DR.	OUTPUT DR.	MULTIPLICATION	MAX. TORQUE INPUT / OUTPUT	ACCURACY
Z46	.50"	.75"	3.9 : 1	250 / 1000 ft. lbs.	+/- 7.5%
Z460	.75"	1.00"	3.9 : 1	600 / 2400 ft. lbs.	+/- 7.5%
Z600	.75"	1.50"	6 : 1	600 / 3600 ft. lbs.	+/- 7.5%

MODEL	"A"	"B"	"C"	"D"	"E"	"F"	"G"
Z46	1.06"	5.95"	1.76"	1.25"	8.78"	.75"	2.75"
Z460	1.37"	8.34"	2.43"	1.75"	12.12"	1.00"	3.75"
Z600	1.87"	10.48"	3.06"	1.75"	14.56"	1.50"	4.00"



OPTIONAL REACTION ARM

MODEL	"A"	"B"	"C"	"D"
Z46	3.75"	1.62"	4.50"	2.68"
Z460	4.75"	2.38"	5.25"	2.87"
Z600	5.00"	2.62"	6.25"	3.87"